

PARK



LYDIA HEARST

HOLLYWOOD
HORROR QUEEN

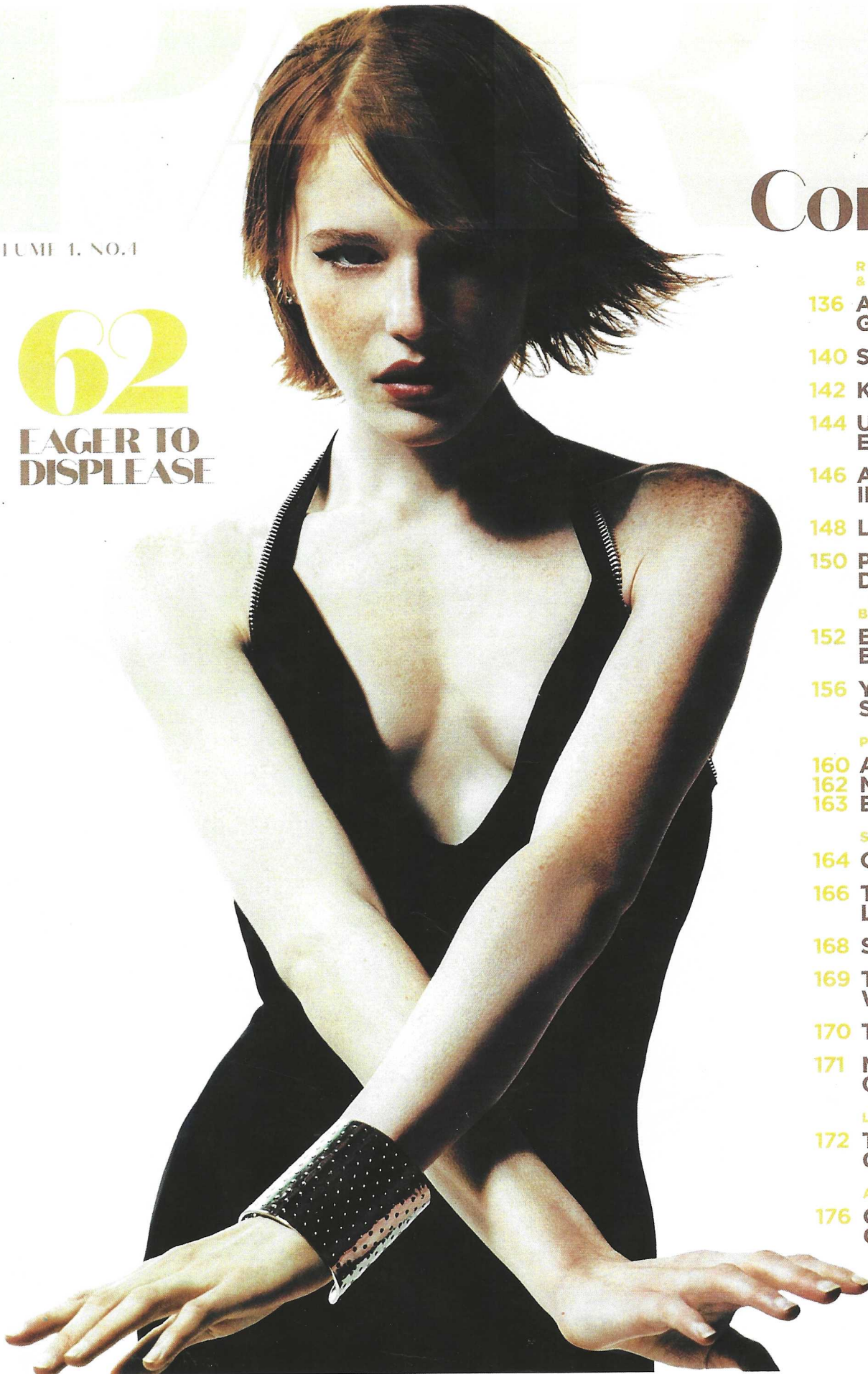
+

PATRICK
MCMULLAN
R. COURI HAY
BOB MACKIE
GEORGE
WAYNE
STEWART
SHINING
ANTHONY
HADEN-
GUEST

VOLUME 1, NO.1

62

EAGER TO
DISPLEASE



Contents

REAL ESTATE & SHELTER

- 136 ANELLE
GANDELMAN
- 140 SUSAN VANECH
- 142 KLAR
- 144 UNLIMITED
EARTH CARE
- 146 A TREEHOUSE
IN MANHATTAN
- 148 LISA LIPPMAN
- 150 PALM BEACH
DESIGN MASTERS

BEAUTY

- 152 BERENICE
ELECTROLYSIS
- 156 YOUR BEST
SELF TV

PROFILE

- 160 ANDY SABIN
- 162 MOLLY DEVOSS
- 163 BLOCKBOARD

SOCIAL SAFARI

- 164 COURI
- 166 THE HAT
LUNCHEON
- 168 SAVE VENICE
- 169 THE ANDY
WARHOL DIARIES
- 170 TEFAF NY
- 171 NYBG ANNUAL
ORCHID DINNER

LOOK BACK

- 172 THE WATERMILL
CENTER

AND FINALLY

- 176 CARTOON
CORNER

Unlimited Earth Care

Designing the Summer Garden of Your Dreams

BY LAUREN BENS



that wow, explains that hardscaping is very important. "I try not to leave jarring transitions between the natural and the constructed elements of a landscape. Things like mossy planted paths, or limestone steps framed in overflowing hydrangeas, are some of the ways I've blended hardscaping to not disturb the mood of the plantings. To design spaces for leisure and entertainment outside, I aim for a modern but distinctly Hamptons look."

He also designs in a site-specific way to complement his clients' lifestyles. "I try to plan natural spaces that invite people outdoors year-round - evergreens at different heights and colors to bring texture to winters, and careful palettes of bulbs to follow in spring. Maybe

herb or veggie gardens for those who love cooking or have children, and warm but modern entertaining spaces by the pool for talented hosts. Color has become my signature. I'll always design in a way that uses color to enhance the emotion of a garden."

People are now living a true outdoorsy lifestyle more than ever before, something which Frederico has always encouraged with his designs, especially through his lighting choices and furniture in unique materials.

In a place like the Hamptons, which is home to many varying environments, Frederico uses native plants wherever possible, or at least well-adapted plants, and does his best to invite hardworking pollinators. "The monarch



For a truly lush and luxe background this summer, Frederico Azevedo, founder of Unlimited Earth Care based in Bridgehampton, can design the garden of your dreams. Growing up, Azevedo, who studied landscape design in Brazil, the US and the UK, fell in love with tending to his own vegetable garden which he was originally given in order to curb his fascination with rearranging planters.

In addition to garden and landscape design, Unlimited Earth Care offers installation,

maintenance, lawn care, irrigation, and other services. You can get all the products required to get your garden going with their two stores in Bridgehampton, including the Garden Concept Store, which carries a curated selection of planters, outdoor furniture, and garden accessories, and The Garden Market, which features native and well-adapted plants as they are well-suited for the conditions in the Hamptons.

When it comes to combining his expertise in both architecture and the environment to design a special outdoor space for his clients, this landscape whisperer who makes gardens

butterfly population is dwindling, so I plant their favorite snacks, like verbena bonariensis. I've also been designing meadows as an alternative to lawns as they require less maintenance and irrigation and are reseeded by birds. It doesn't hurt that they're beautiful to look at - golden wheat speckled with soft flowers swaying in the wind makes for a lovely view and feels right for the Hamptons."

Read all about Frederico's tips and tricks for the perfect summer garden in his book, *The Luminous Gardens of Frederico Azevedo*. **P**

Unlimitedearthcare.com