

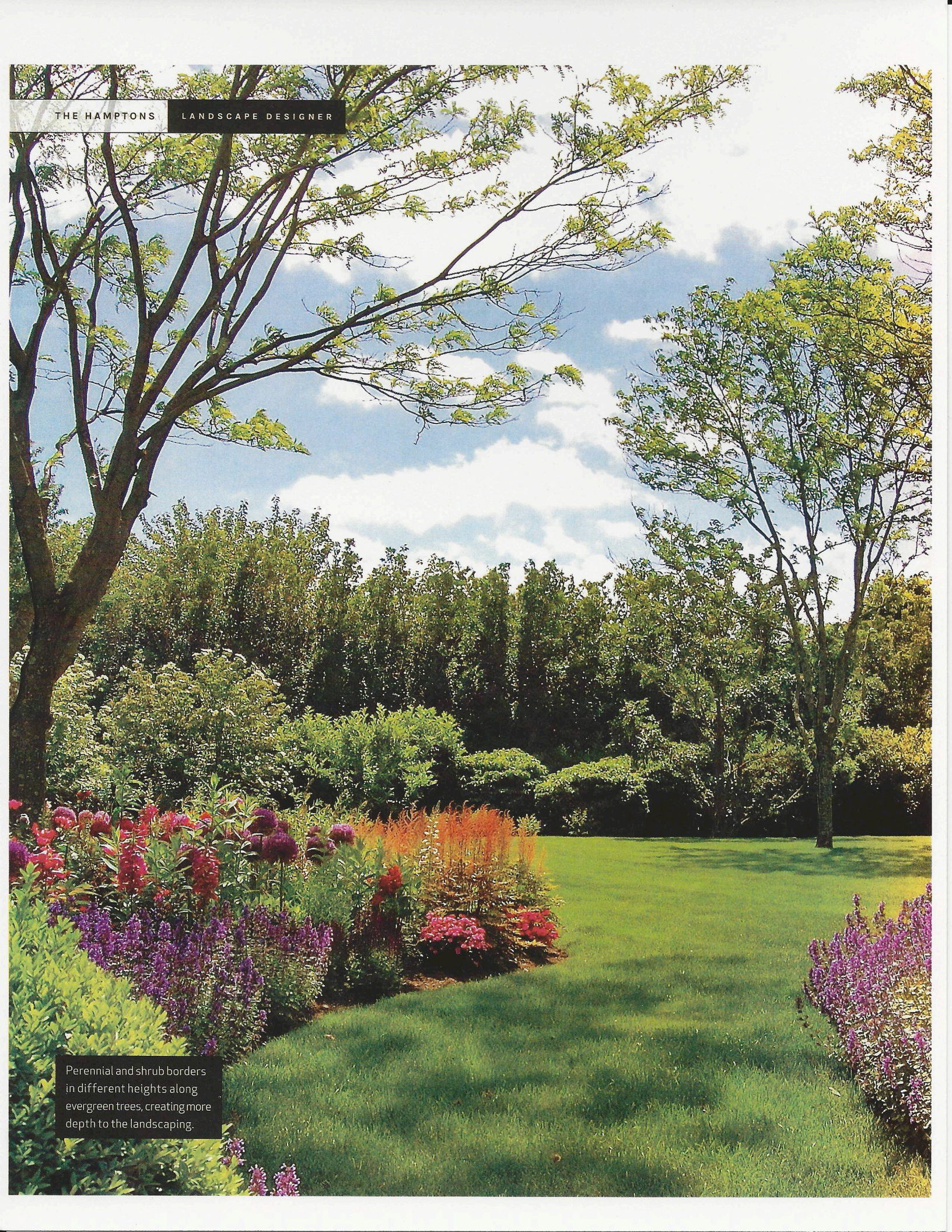


THE LUXURY OF HOME | 2015

ARCHITECTURE INTERIOR DESIGN BUILDED ESTATE



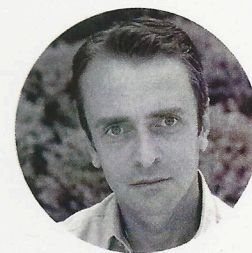
\$19.95
A SANDOW PUBLICATION
55>
0 74470 03308 0



THE HAMPTONS

LANDSCAPE DESIGNER

Perennial and shrub borders in different heights along evergreen trees, creating more depth to the landscaping.



"Landscaping is something that should inspire and gratify a client. That's what nature should do to you."

UNLIMITED EARTH CARE

Discerning clients in the Hamptons find **outdoor splendor** and **day-to-day inspiration** in the award-winning landscape creations by Frederico Azevedo at Unlimited Earth Care.

Prior to opening his headquarters and retail space in Bridgehampton in 2006, Frederico Azevedo had spent more than a decade honing his free-form, modernist-inspired style around the globe as a landscape designer, completing projects everywhere from Spain and Italy to France and his native Brazil. And it's a good thing he did, the owner of award-winning Unlimited Earth Care admits. "You have a very cosmopolitan clientele in the Hamptons," says Azevedo, who has been in business overall since 1993. "So we work with people who have seen landscaping from all over the world; they are very well informed. That pushes me to always be researching and thinking about what is coming next, and to not get stuck with one pattern of design." As evidenced by the stunning outdoor work that Azevedo and his experienced team of landscape visionaries produce—brilliantly executed gardens and borders in Hamptons environments that range from farmlands and woodlands to beach properties—Unlimited Earth Care is never one to rest on its laurels.



PHOTOGRAPH COURTESY OF UNLIMITED EARTH CARE

