

CELEBRATING 20 STYLISH SEASONS!

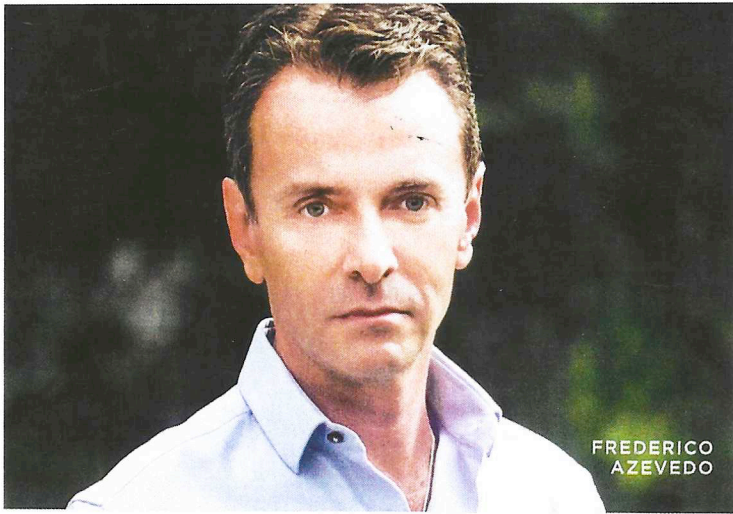
# HCG&G

Hamptons Cottages and Gardens

COTTAGESGARDENS.COM | JULY 1, 2022

SPECIAL ISSUE

# 20 YEARS!



FREDERICO  
AZEVEDO



ALEXANDRA  
PAPPAS

# 2022 JUDGES



TATYANA  
MIRON



FRANCIS  
D'HAENE



ANTONELLA  
BERTELLO



**DREAM WEAVE**

Featuring a traditional woven frame and a modern silhouette, the Blithedale side table will settle in nicely with any outdoor decor scheme. Available in three colors (shown: Coastal Blue), \$698, at *Serena & Lily*, 332 Montauk Hwy, Wainscott, 631-537-5544, [serenaandlily.com](http://serenaandlily.com).



**POUF POWER**

Hand-woven from strands of rope cord and available in three bright colors, Italian designer Paola Lenti's colorful poufs are made for both lounging and laughing. \$3,180 each, at *West | Out East*, 25 Newtown Ln., East Hampton, 631-324-3103, [westouteast.com](http://westouteast.com).



**CHAISE MOI**

Leave your problems beyond the hedges as you relax in this sleek scratch- and weather-resistant chaise. \$1,529, at *Kathy Kuo Home*, 30 Jobs Ln., Southampton, 888-908-2925, [kathykuohome.com](http://kathykuohome.com).



**BRIGHT ADDITION**

Wireless and rechargeable, the Poldina Mini Pro LED table lamp will light up the night long after the party's over. Available in eight colors (shown: dark gray), \$299, at *Tbayers Outdoor Living*, 2434 Main St., Bridgehampton, 631-537-0077, [tbayershardware.com](http://tbayershardware.com).



**BRAZIL NUTS**

Landscape designer Frederico Azevedo, a native of Brazil and the proprietor of Bridgehampton's Unlimited Earth Care, has just introduced pieces from Sossego Design at his outdoor garden market. Fellow Brazilian Aristeu Pires designed both the Luiza chairs and Z.X table from sustainably harvested native Brazilian hardwoods. Chairs, \$1,430 each, and table, from \$4,710, 2249 Scuttle Hole Rd., 631-725-7551, [unlimitedearthcare.com](http://unlimitedearthcare.com).