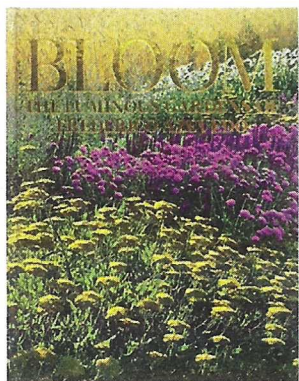


MODERN LUXURY

HAMPTONS





Au Naturel

LANDSCAPE DESIGNER FREDERICO AZEVEDO RELIES ON GARDEN DESIGN TO ENHANCE PROPERTY VALUES ON MULTIPLE FRONTS AND SHARES HIS SECRETS IN A NEW BOOK, *BLOOM*.

BY JEAN NAYAR

A History With Nature

I've always loved the outdoors and I grew up on a farm in Brazil, where I had my own plot to plant, and I just fell in love with it. I went on to study landscape design in England and the United States, but I knew I wanted to be in the Hamptons, so I moved here in the '90s and founded Unlimited Earth Care (unlimitedearthcare.com).

Layered Approach to Gardens

In Brazil, the focus is on public landscaping—parks, museum grounds, botanical gardens. The English focus more on private gardens. Brazil gave me color and form and inspired me to reach for grand ideas, and England taught me how to apply my art to any situation. I've also been

very inspired by the “unnatural naturalness” of the English garden, meaning that everything is intentional, but not overly arranged, so it feels a little magical.

Natural Beauty in the Hamptons

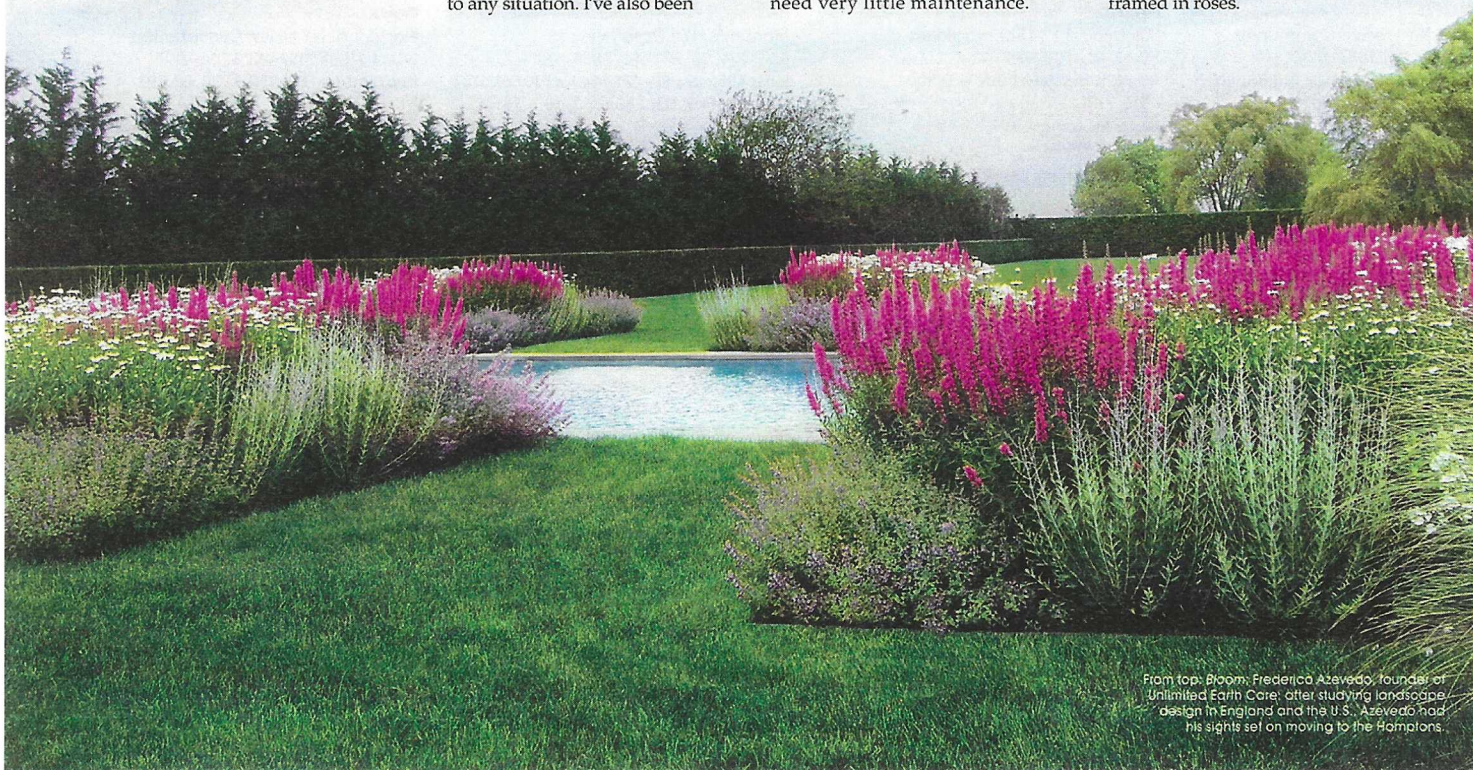
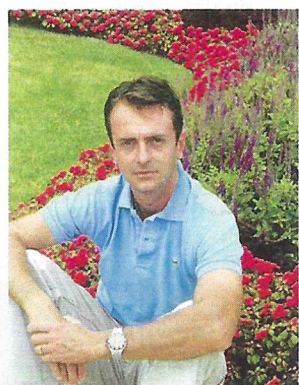
My designs are about natural beauty and working with the environment to make something that's new but still responds to the conditions of the site—whether waterfront, fields or meadows, small or large. I look for creative ways to allow people to be outside among the flowers. They want paths, hidden areas, artistic features and unique ways to eat, swim and relax in nature. I design with native and well-adapted plants, and I often create sustainable meadows that need very little maintenance.

A Composition of Ideas

Bloom (\$75, Pointed Leaf Press) is my first book and was just released in June. I felt compelled to create a book because Unlimited Earth Care just had its 25th anniversary, and I have this really large body of work now that represents me as a landscape designer, so the timing was right. I also treated the book as an opportunity to meditate on landscape design as a medium in general. I broke it down into what I consider the basic elements: vista, bloom, green, border, tree, stone, water and accessories.

At Home in the Hamptons

I live in North Haven on a property I share with my partner, Alex Cohen. It was surrounded by farmland, and I took that as a good sign for the kind of gardens and landscape I wanted to plant. I designed the house with an architect so that every room has a different view of the outside, and so the pool couldn't be seen from the house in the winter. In the summer, we're almost always outside—there's a bluestone patio with a pergola covered in climbing roses. So views of the gardens and the rest of the property are always framed in roses.



From top: *Bloom*; Frederico Azevedo, founder of Unlimited Earth Care; after studying landscape design in England and the U.S., Azevedo had his sights set on moving to the Hamptons.

PHOTOS COURTESY OF FREDERICO AZEVEDO