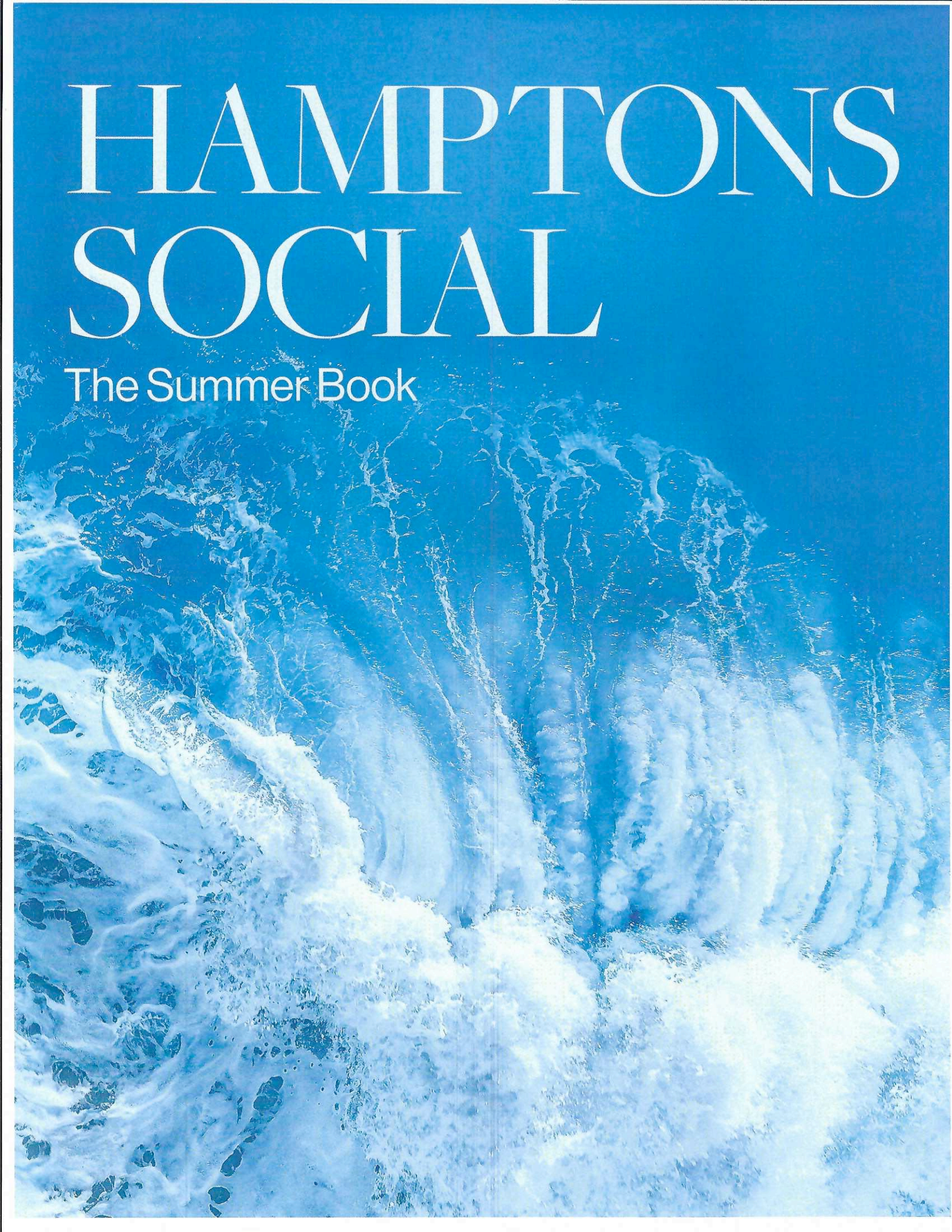


# HAMPTONS SOCIAL

The Summer Book



## Frederico Azevedo Transforms Landscapes into Art

**F**rederico Azevedo, award-winning designer and founder of the landscaping design firm and concept store Unlimited Earth Care, is known for his unique color palettes, dramatic curving floral borders and pollinator-friendly meadows. This year marks the Bridgehampton business's 30th anniversary.

Azevedo's design philosophy begins with color. "Color is a powerful element of natural beauty; it fuels the incredible emotions that flowers and trees create in us, and carefully constructing palettes that inspire and heighten these moods has become a signature of my work," he said.

"There is so much energy in say, clusters of golden blooms alongside glowing oranges tempered by delicate sage greens, or overflowing masses of purple and blue-hued hydrangeas," said Azevedo.

He incorporates a wide selection of native and well-adapted plants, flowers, shrubs, trees, and herbs into his compositions. Some of his favorites include Shasta daisies, Agastache, coreopsis, achillea, Carex grasses, verbena bonariensis, seeded wheat, white oak trees and flowering dogwood trees.

**W**hile his landscaping has been compared to paintings, he is actually more inspired by animation. "Gardens move in the wind and look different throughout the day and of course in different seasons, so I've always been inspired by the moving color palettes of animation. Like cinematic animation, a garden is a whole story," he said.

Azevedo believes a beautiful garden has to be a healthy one, so for every color combination that he creates he also considers whether the plants live symbiotically with one another, whether a certain tree could help shade them, or whether he can incorporate more textures in a way that naturally discourages nibbling rabbits.

"I also create views from different points in the garden and from the house. I plant strategically, altering the landscape with grand evergreens and building depth at the edges of the property to make large lawns feel intimate, or tweaked to make smaller properties feel more open. My philosophy is to consider the elements of the garden — stone, water, trees and flowers — as their own performers without losing sight of the way they need to connect in the final design," he said.

Azevedo believes that upon completion of an installation, the design has only just begun. He finds the relationships he builds with clients fulfilling. "I love to hear from clients who just caught their new cherry tree in peak bloom for the first time, or who visit me at the Garden Concept Store to find furniture for their new favorite spot in their garden where the butterflies visit," he said.

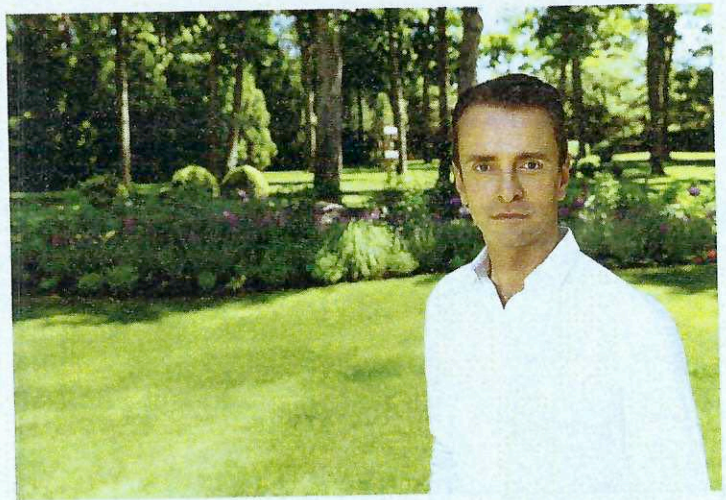
**H**is design aesthetic is encapsulated in his coffee-table book, *Bloom: The Luminous Gardens of Frederico Azevedo*, published by Pointed Leaf Press. It is divided into the elements of natural design by chapter — Stone, Water, Blooms — which gave him the chance to consider and explain his design approach in a more individual way. While sold out online, the book is available for sale at his Garden Design Shop.

Azevedo's firm has expanded significantly with the opening of the Garden Concept Store, which features artisanal outdoor furniture, sustainable planters, lights, and other garden accessories that follow the Unlimited Earth Care aesthetic. The most recent addition, the Garden Market, carries a curated selection of native and well-adapted plants and flowers.

**T**o celebrate Unlimited Earth Care's anniversary, Azevedo is hosting a party on Saturday, June 17 at the Garden Market at 2249 Scuttle Hole Road in Bridgehampton from 5 to 7 PM.

"Everyone is invited to join Unlimited Earth Care in celebrating with flowers, good music, cocktails, and hors d'oeuvres," Azevedo said. "It's a big anniversary, and we're looking forward to dancing and clinking glasses amongst the flowers. Butterflies and hummingbirds usually make an appearance as well."

Anyone who would like to receive Unlimited Earth Care's illustrated newsletter can visit [unlimitedearthcare.com](http://unlimitedearthcare.com), or email [info@unlimitedearthcare.com](mailto:info@unlimitedearthcare.com)



Left: Majestic purple lavender in one of Frederico's gardens courtesy of Unlimited Earth Care

Above: Frederico Azevedo courtesy of Unlimited Earth Care

SPOTLIGHT

# THE AWARD-WINNING GARDENS OF FREDERICO AZEVEDO

by Elizabeth Zindel Wells

